



GRAMIN KISHAN VIKAS SOCIETY

Empowering Farmer | Enriching Rural India

PROFILE

2026-2027

किसान समृद्ध • गाँव सशक्त
समाज विकसित • राष्ट्र समृद्ध

BASIC INFORMATION

Particulars	Details
• Organization Name	Gramin Kishan Vikas Society
• Short Name	GKVS
• Legal Status	Registered Non-Profit Organization under Society Registration Act, 1860
• Year of Establishment	2006
• Registration Number	UK05908072019001754
• Renewal Registration No.	RENEW0821003547
• Registration Validity	Valid up to 7 August 2026
• Registered Office	Village Shivanagar, Post Bhigun, Vaya Ghanshali, Tehri Garhwal – 249155, Uttarakhand
• Head Office	4th Floor, Chauhan Tower, 6 No. Puliya Chowk, Ring Road, Dehradun – 248001, Uttarakhand
• Website	www.graminkishanvikassociety.org
• Official Email	graminkishanvikassociety@gmail.com
• Founder/ Director/ CEO	Mr. Prabeen Singh Bhandari
• Mobile Number	9897698258/
• Email Id	prabeenbhandari12@gmail.com
• PAN Number	AAAAG5178L
• TAN Number	MRTG07492C
• GSTIN	05AAAAG5178L1ZI
• NGO Darpan Registration	UA/2017/0172819
• MSME Registration	UDYAM-UK-05-0111752
• EPF Registration No.	UKDDN3263944000
• ESI Registration No.	61000618880000900
• 12A Certification	AAAAG5178LE20217
• 80G Certification	AAAAG5178LF20211
• Years of Experience	19+ Years
• Operational Presence	Uttarakhand, Himachal Pradesh, North East, Rajasthan, Uttarpradesh
• Core Working Areas	Water Conservation, Forest Conservation, Agricultural Conservation, Animal Husbandry, Livestock Farming, Disaster Management, Public Conservation, Organic & Natural Farming Certificate

Particulars	Details
• Farmer Network	8,500 Organic Farmers & 10,000 Natural Farming Farmers
• Village Reach	601+ Remote Himalayan Villages
• Self Help Groups & FPO Facilitated	1,342+ SHGs / 15 FPOs
• Office Staff Strength	19
• Field Staff Strength	5
• Volunteer	7
• Technical Experts	Hydro Geologists, Civil Engineers, GI Experts, Remote Sensing Experts, Agribusiness Experts
• BANK NAME (LOCAL)	IDFC FIRST BANK
• IFSC CODE	IDFB0021231
• ACCOUNT NUMBER	10155082278
• GRANT RECEIVED - 2022-23	1,75,49,774.00/-
• GRANT RECEIVED - 2023-24	1,06,72,053.00/-
• GRANT RECEIVED - 2024-25	1,06,51,561.00/-
• GKVS Departments	Planning, Implementation, Finance, I.T, Management, HR

ABOUT GRAMIN KISAN VIKAS SOCIETY (GKVS)

Gramin Kisan Vikas Society (GKVS) is a dedicated rural development organization committed to empowering communities through sustainable livelihood promotion, skill development, environmental conservation, water resource management, women empowerment, and social welfare initiatives. Since its establishment, GKVS has been working tirelessly across Uttarakhand to improve the quality of life of rural populations by connecting communities with government schemes, capacity-building programs, and income-generating opportunities.

GKVS believes that sustainable rural development can only be achieved when communities become self-reliant and actively participate in their own growth. With this vision, the organization collaborates with various government departments, local institutions, self-help groups, and community stakeholders to implement impactful development projects in remote and underserved regions.

Over the years, GKVS has successfully implemented major government-supported programs including Jal Jeevan Mission, Green India Mission, Panchayati Raj Capacity Building Programs, Mukhyamantri Hunar Yojana, Shilpi Gram Yojana, Spring and River Rejuvenation Authority (SARRA) Projects, and several livelihood enhancement initiatives. Through these programs, the organization has facilitated village water management, sanitation awareness, skill development training, environmental conservation, digital governance capacity building, and entrepreneurship promotion.

One of the key achievements of GKVS is its contribution to the Jal Jeevan Mission, where the organization supported implementation activities in 989 villages across 11 districts of Uttarakhand, strengthening community participation in safe drinking water management and sustainable water resource utilization. The organization has also empowered hundreds of women and youth through vocational training programs in beautician services, jute product manufacturing, weaving, and other livelihood-oriented trades.

GKVS actively promotes environmental sustainability through watershed management, spring rejuvenation, afforestation, biodiversity conservation, organic farming awareness, and eco-friendly livelihood practices. The organization also undertakes scientific surveys, DPR preparation, and natural resource management projects aimed at improving water security and ecological balance in rural and mountainous regions.

With a strong focus on women empowerment, youth engagement, and community leadership, GKVS supports the formation and strengthening of Self-Help Groups (SHGs), encourages entrepreneurship, and creates opportunities for economic independence. Through training, awareness campaigns, and grassroots interventions, the organization has positively impacted thousands of beneficiaries and contributed to inclusive rural development.

Today, GKVS continues to serve as a trusted development partner, working towards its vision of creating self-reliant, empowered, and sustainable rural communities. By integrating social development, environmental stewardship, skill enhancement, and community participation, the organization remains committed to building a prosperous, inclusive, and resilient future for rural India.

ORGANIZATION HISTORY

Gramin Kisan Vikas Society (GKVS) was established with the vision of creating sustainable rural development and improving the socio-economic conditions of farmers and underprivileged communities. Since its inception, GKVS has consistently worked toward empowering rural populations through agriculture development, livelihood generation, education, skill enhancement, and social welfare initiatives.

Over the years, the organization has expanded its outreach across villages and communities, building strong partnerships with institutions, experts, and stakeholders. Through continuous innovation and dedicated grassroots efforts, GKVS has evolved into a trusted organization committed to inclusive growth, environmental sustainability, and community transformation.

Why GKVS Was Founded

GKVS was founded to address the growing challenges faced by rural communities, especially farmers who lacked access to modern agricultural knowledge, financial opportunities, education, and proper support systems. The organization recognized the need for a dedicated platform that could bridge the gap between rural populations and sustainable development opportunities. GKVS aims to uplift marginalized communities by promoting awareness, self-reliance, skill development, and improved agricultural practices. The foundation of GKVS is rooted in the belief that empowering individuals with knowledge, resources, and opportunities can create long-term positive change and strengthen rural economies.

Vision Report

“Gramin Kisan Vikas Society (GKVS)”

Vision Statement

"Prosperous Environment, Secure Communities, and Self-Reliant Rural Society."

To create a future where natural resources are conserved, livestock is protected, rural communities are economically empowered, and villages become resilient to environmental and natural disasters. GKVS envisions a sustainable rural ecosystem where people, nature, and livelihoods coexist in harmony, ensuring long-term prosperity and environmental security for future generations.

Core Pillars and Strategic Framework

1. Water (Water Conservation & Management)

Goal

To ensure water security and provide adequate water resources for agriculture, livestock, and domestic use.

Key Strategies

- Restoration and rejuvenation of traditional water sources such as ponds, wells, springs, and water reservoirs.
- Promotion of rainwater harvesting and groundwater recharge systems.
- Encouraging farmers to adopt micro-irrigation techniques such as drip and sprinkler irrigation.
- Strengthening community participation in sustainable water management practices.

2. Forests (Forestry & Environmental Conservation)

Goal

To increase green cover, conserve biodiversity, and promote ecological balance.

Key Strategies

- Conducting large-scale afforestation and community forestry programs.
- Promoting plantation of indigenous, medicinal, and climate-resilient species.
- Raising awareness on forest conservation and prevention of forest fires.
- Encouraging sustainable utilization of forest resources while protecting natural ecosystems.

3. Land (Soil Health & Sustainable Agriculture)

Goal

To improve soil fertility, prevent land degradation, and promote sustainable agricultural practices.

Key Strategies

- Promoting Organic Farming, Natural Farming, and Vermicomposting.
- Supporting Organic and Natural Farming Certification for farmers.
- Conducting soil testing and providing scientific crop management guidance.
- Preventing soil erosion through contour bunding, grass plantation, and watershed management practices.

4. People (Community Empowerment & Human Development)

Goal

To strengthen the socio-economic well-being of farmers, women, youth, and rural communities.

Key Strategies

- Providing training on modern agricultural technologies and government welfare schemes.
- Promoting women-led Self-Help Groups (SHGs) and rural entrepreneurship.
- Organizing skill development and livelihood enhancement programs for youth.
- Improving access to education, healthcare, and social welfare services.

5. Livestock (Animal Husbandry & Animal Welfare)

Goal

To promote livestock development and ensure animal welfare in rural areas.

Key Strategies

- Supporting scientific animal husbandry and dairy development programs.
- Organizing free veterinary health camps and vaccination drives.
- Promoting improved livestock breeds and sustainable livestock management.
- Providing support and shelter for abandoned and vulnerable animals.

6. Disaster Management & Resilience

Goal

To minimize the impact of natural disasters and strengthen community resilience.

Key Strategies

- Establishing village-level Disaster Response Teams and training local volunteers.
- Providing first-aid, rescue, and emergency preparedness training.
- Delivering immediate relief assistance during floods, droughts, landslides, earthquakes, and other disasters.
- Supporting rehabilitation, livelihood restoration, and climate-resilient agricultural practices.

Expected Outcomes

- Reduction in rural migration through increased local livelihood opportunities.
- Improved groundwater recharge and restoration of degraded land.
- Enhanced environmental sustainability through conservation of water, forests, and biodiversity.
- Increased adoption of organic and natural farming practices.
- Strengthened women empowerment and community participation.
- Improved livestock health and productivity.
- Greater resilience of rural communities against climate change and natural disasters.
- Sustainable and inclusive rural development leading to higher quality of life and economic prosperity.

Long-Term Vision

GKVS aspires to create Smart, Sustainable, Climate-Resilient, and Self-Reliant Villages, where natural resources are protected, communities are empowered, livelihoods are secure, and future generations inherit a healthier and more prosperous environment.

Mission Report

“Gramin Kisan Vikas Society (GKVS)”

Mission Statement

"To promote the integrated conservation and sustainable development of Water, Forests, Land, People, Livestock, Rivers, and Disaster Resilience, creating a harmonious balance between nature and rural communities while enhancing the socio-economic well-being of farmers and vulnerable populations."

Six Pillars of Our Mission

1. Water (Water Conservation & Management)

We are committed to ensuring water security through the restoration of traditional water sources, promotion of rainwater harvesting, groundwater recharge, and adoption of efficient irrigation technologies. Our goal is to make water accessible for agriculture, livestock, and domestic use while encouraging responsible water management practices.

2. Forests (Forest Conservation & Environmental Sustainability)

GKVS works towards increasing green cover, conserving biodiversity, and protecting natural ecosystems. Through afforestation programs, promotion of indigenous and medicinal plant species, forest fire prevention initiatives, and community awareness campaigns, we strive to preserve Uttarakhand's rich ecological heritage.

3. Land (Soil Health & Sustainable Agriculture)

We promote sustainable agriculture through Organic Farming, Natural Farming, and Organic Certification programs. Our efforts focus on improving soil fertility, preventing land degradation, reducing soil erosion, and encouraging climate-resilient agricultural practices that enhance productivity while protecting the environment.

4. People (Community Development & Human Empowerment)

The empowerment of rural communities lies at the heart of our mission. We support farmers, women, youth, and marginalized groups through skill development, livelihood enhancement, entrepreneurship promotion, capacity-building programs, and access to government welfare schemes. Special emphasis is placed on women-led Self-Help Groups (SHGs) and youth empowerment.

5. Livestock (Animal Husbandry & Animal Welfare)

Recognizing livestock as a vital component of rural livelihoods, GKVS promotes scientific animal husbandry, dairy development, breed improvement, veterinary health services, vaccination programs, fodder management, and animal welfare initiatives to strengthen rural economies.

6. Rivers & Waterways (River Conservation & Rejuvenation)

We work towards protecting rivers, streams, and natural water channels through pollution control, watershed management, spring rejuvenation, catchment area treatment, and community-based conservation initiatives. Our goal is to ensure healthy river ecosystems that support both biodiversity and local livelihoods.

7. Disaster Management & Climate Resilience

Given Uttarakhand's vulnerability to floods, landslides, earthquakes, cloudbursts, and other natural disasters, GKVS actively promotes disaster preparedness, risk reduction, emergency response, rehabilitation, and climate-resilient development practices. We train community volunteers as first responders and support affected families during emergencies.

Strategic Objectives

Sustainable Agriculture

Promote organic and natural farming practices, facilitate Organic Certification, improve soil health, and reduce dependence on chemical inputs.

Water Security

Protect and rejuvenate traditional water sources, improve irrigation systems, and strengthen community-based water management.

Environmental Conservation

Enhance forest cover, protect biodiversity, restore degraded ecosystems, and promote sustainable natural resource management.

Community Empowerment

Strengthen the social and economic status of rural communities through education, training, entrepreneurship, and livelihood development.

Livestock Development

Improve livestock productivity, animal health, and sustainable dairy-based livelihoods.

Disaster Preparedness

Build resilient communities capable of effectively responding to and recovering from natural disasters and climate-related challenges.

Methodology and Approach

Community Participation

GKVS believes in participatory development and actively involves local communities, Gram Panchayats, government agencies, and stakeholders in planning and implementation.

Traditional Knowledge and Modern Innovation

We integrate traditional Himalayan knowledge systems with modern technologies and scientific approaches to create sustainable and practical development solutions.

Institutional Collaboration

The organization works in partnership with government departments, NABARD, CSR partners, research institutions, and development agencies to maximize impact and outreach.

Conclusion

The GKVS model based on Water, Forests, Land, People, Livestock, Rivers, and Disaster Resilience represents a holistic approach to sustainable rural development. Through environmental conservation, livelihood promotion, community empowerment, and disaster preparedness, GKVS is committed to building resilient, self-reliant, and prosperous rural communities while safeguarding the natural resources of Uttarakhand for future generations.

Goals of Gramin Kisan Vikas Society (GKVS)

The success of any organization depends on its ability to establish clear, measurable, and purpose-driven goals. At Gramin Kisan Vikas Society (GKVS), our goals guide our efforts toward sustainable rural development, community empowerment, environmental conservation, and livelihood enhancement. These goals help us transform our vision and mission into meaningful action and measurable impact.

Core Goals of GKVS

- **Vision and Mission Fulfillment**

To work towards creating self-reliant, empowered, and sustainable rural communities through inclusive development initiatives, capacity building, and community participation.

- **Financial Sustainability**

To strengthen the organization's financial stability through effective resource management, government partnerships, grants, CSR collaborations, fundraising initiatives, and sustainable project implementation.

- **Social Impact**

To improve the socio-economic conditions of rural communities by promoting skill development, women empowerment, livelihood generation, natural resource management, and access to government welfare schemes.

- **Growth and Expansion**

To expand the reach of GKVS programs across Uttarakhand and other regions by introducing innovative projects, strengthening partnerships, and increasing community outreach.

- **Stakeholder Satisfaction**

To build trust and long-term relationships with beneficiaries, government departments, partners, donors, employees, volunteers, and community institutions through transparency, accountability, and quality service delivery.

- **Innovation and Technology Adoption**

To integrate modern technologies, digital governance tools, climate-resilient practices, organic certification systems, and innovative development models into rural transformation initiatives.

Classification of Goals

Short-Term Goals (0–1 Year)

- Strengthen ongoing development projects and community outreach programs.
- Expand awareness campaigns on organic farming, natural farming, and government schemes.
- Increase participation of women, youth, and farmer groups in training programs.
- Improve organizational branding, communication, and digital presence.
- Strengthen operational systems and team coordination.

Medium-Term Goals (1–3 Years)

- Expand project implementation across additional districts and villages.
- Develop strong market linkages for farmers, SHGs, and rural entrepreneurs.
- Promote Organic and Natural Farming Certification among farming communities.
- Strengthen digital governance and community capacity-building initiatives.
- Enhance financial sustainability through diversified funding sources.

Long-Term Goals (3–5+ Years)

- Establish GKVS as a leading rural development organization in India.
- Develop Smart, Digital, and Climate-Resilient Villages.
- Create sustainable livelihood ecosystems that reduce migration from rural areas.
- Promote large-scale environmental conservation and water resource management initiatives.
- Build a self-sustaining institutional framework capable of delivering long-term impact across generations.

Action Plan for Achieving Goals

Strategic Planning

Develop clear implementation strategies with defined responsibilities, timelines, and measurable outcomes for each program and project.

Regular Monitoring and Evaluation

Conduct periodic reviews, field assessments, and impact evaluations to measure progress and ensure accountability.

Transparency and Good Governance

Maintain transparency in financial management, reporting, decision-making, and stakeholder engagement.

Positive Organizational Culture

Foster a collaborative, inclusive, and motivating work environment that encourages innovation, learning, and professional growth.

Community Participation

Promote active involvement of local communities, Self-Help Groups (SHGs), farmer groups, Panchayats, and youth organizations in planning and implementation processes.

Organizational Objectives

The success, sustainability, and direction of any organization depend upon its objectives. Objectives serve as guiding principles that help an organization achieve its vision and mission. According to management principles, the objectives of an ideal organization can be categorized into three major areas: Organizational Objectives, Social Objectives, and Individual (Human Resource) Objectives.

1. Organizational Objectives

These objectives focus on the internal growth, financial strength, operational efficiency, and long-term sustainability of the organization.

- **Survival**

The primary objective of any organization is to sustain itself in a competitive and constantly changing environment while overcoming challenges and uncertainties.

- **Financial Sustainability and Stability**

Maintaining financial health is essential for ensuring uninterrupted operations, achieving organizational goals, and supporting future growth and development.

- **Growth and Expansion**

The organization aims to continuously expand its scope of work, enter new regions, diversify its programs and services, and increase its overall impact on society.

- **Efficiency and Productivity**

To maximize the effective utilization of human, financial, and technological resources while minimizing wastage and ensuring optimum performance.

- **Innovation and Adaptability**

To adopt modern technologies, innovative approaches, and best practices in response to evolving social, environmental, and economic needs.

2. Social Objectives

As an integral part of society, every organization has a responsibility to contribute to social welfare and community development.

- **Employment and Livelihood Generation**

To create sustainable livelihood opportunities and promote economic empowerment, particularly among rural communities, women, and youth.

- **Quality Services and Programs**

To provide high-quality services, training programs, and development initiatives that create meaningful and lasting benefits for beneficiaries.

- **Environmental Protection**

To promote environmental conservation through sustainable resource management, eco-friendly practices, climate resilience, and protection of natural ecosystems.

- **Community Development**

To contribute to the overall development of communities by supporting education, health, sanitation, skill development, infrastructure improvement, and social welfare initiatives.

3. Individual and Human Resource Objectives

These objectives focus on the growth, satisfaction, and well-being of employees, volunteers, and stakeholders associated with the organization.

- **Fair Compensation and Recognition**

To ensure equitable compensation, benefits, and recognition for contributions made by employees and team members.

- **Safe and Positive Work Environment**

To provide a healthy, safe, inclusive, and respectful workplace that encourages collaboration, creativity, and professional growth.

- **Capacity Building and Skill Development**

To organize regular training and development programs that enhance knowledge, skills, and professional competencies.

- **Motivation and Employee Engagement**

To encourage excellence through recognition, rewards, participation, and opportunities for career advancement.

SMART Approach to Setting Objectives:

Letter	Meaning	Description
S	Specific	Objectives should be clear, focused, and well-defined, leaving no room for ambiguity.
M	Measurable	Progress and success should be measurable through specific indicators, metrics, or data.
A	Achievable	Objectives should be realistic and attainable with the available resources and capabilities.
R	Relevant	Objectives should align with the organization's vision, mission, values, and strategic priorities.
T	Time-Bound	Each objective should have a defined timeline, target date, or deadline for completion.

By adopting SMART objectives, organizations can improve planning, monitor progress effectively, enhance accountability, and achieve sustainable growth while creating positive social impact.

OUR FUTURE DEVELOPMENT PLANS

Gramin Kisan Vikas Society (GKVS), Uttarakhand

Introduction

Gramin Kisan Vikas Society (GKVS), Uttarakhand, is a leading non-governmental organization (NGO) that has been working since 2006 for sustainable rural development in the mountainous and remote regions of Uttarakhand, including Tehri Garhwal, Uttarkashi, Pauri Garhwal, and Dehradun.

Considering the unique geographical, environmental, and socio-economic challenges of the Himalayan region, GKVS focuses its efforts on six key pillars: Water, Forests, Land, People, Livestock, and Disaster Management. Through an integrated and community-driven approach, the organization aims to promote environmental conservation, livelihood enhancement, and rural self-reliance.

1. Water (Water Conservation & Management)

The depletion of traditional water sources such as springs and natural streams is one of the major challenges in Uttarakhand's hill regions.

Objectives

- Restore and rejuvenate traditional water sources, springs, and natural streams.
- Promote rainwater harvesting through the construction of water tanks, ponds, and recharge structures.
- Improve groundwater recharge and water conservation practices.
- Ensure access to safe and clean drinking water in remote rural communities.
- Raise awareness about efficient water use and prevention of water pollution.

2. Forests (Forest & Environmental Conservation)

Forests play a vital role in maintaining the ecological balance and supporting rural livelihoods in Uttarakhand.

Objectives

- Conduct afforestation and reforestation programs using indigenous species such as Oak (Banj) and Rhododendron (Buransh).
- Prevent forest degradation and reduce the risk of forest fires through community awareness and pine needle (Pirul) management.
- Conserve biodiversity and protect the fragile Himalayan ecosystem.
- Promote sustainable use of forest resources and environmental stewardship among local communities.

3. Land (Sustainable Agriculture & Land Management)

Agricultural land in the Himalayan region is limited, and soil erosion poses a significant challenge to rural livelihoods.

Objectives

- Promote Organic Farming, Natural Farming, and Organic Certification programs.
- Encourage the use of vermicompost and eco-friendly agricultural practices while reducing dependence on chemical fertilizers.
- Utilize abandoned and fallow lands for horticulture, medicinal plant cultivation, and income-generating activities.

- Prevent soil erosion and improve soil fertility through scientific land management techniques.
- Promote climate-resilient and sustainable agricultural systems.

4. People (Community Development & Human Empowerment)

The development of human resources and strengthening rural communities are at the core of GKVS's mission.

Objectives

- Empower women through the formation and strengthening of Self-Help Groups (SHGs) and financial inclusion initiatives.
- Provide skill development and vocational training programs for rural youth.
- Promote entrepreneurship and livelihood opportunities at the local level.
- Improve access to healthcare, education, and social welfare services in remote areas.
- Enhance community participation in local governance and development processes.

5. Livestock (Animal Husbandry & Livestock Development)

Livestock is a major source of livelihood and income for rural households in Uttarakhand.

Objectives

- Promote scientific animal husbandry and dairy farming practices.
- Improve livestock breeds and increase milk production through modern dairy development programs.
- Organize veterinary health camps and vaccination drives in rural communities.
- Develop sustainable fodder resources and grazing lands to improve livestock nutrition.
- Support animal welfare and livestock-based livelihood enhancement initiatives.

6. Disaster Management & Relief

Uttarakhand is highly vulnerable to natural disasters such as earthquakes, landslides, floods, and cloudbursts.

Objectives

- Train rural communities and youth in disaster preparedness and emergency response.
- Develop village-level disaster management and first-response teams.
- Provide relief assistance, including food, medicines, shelter, and essential supplies during emergencies.
- Support rehabilitation and livelihood restoration for disaster-affected families.
- Promote climate adaptation and resilience-building measures to reduce disaster risks.

Conclusion

The ultimate objective of Gramin Kisan Vikas Society (GKVS) is to build self-reliant, resilient, and prosperous rural communities. Through the integrated development of Water, Forests, Land, People, Livestock, and Disaster Management, the organization is playing a significant role in reducing rural migration, strengthening local livelihoods, conserving natural resources, and promoting sustainable development across the Himalayan region of Uttarakhand.

GKVS remains committed to creating a future where communities and nature thrive together, ensuring environmental sustainability, economic growth, and improved quality of life for present and future generations.

Founder's Message

“Prosperous Hills, Protected Environment, and Self-Reliant Rural Communities”



Dear Partners, Well-Wishers, and Respected Rural Communities,

The sacred land of Uttarakhand is renowned not only for its breathtaking natural beauty but also for its unique mountain culture, resilience, and environmental sensitivity. When we established Gramin Kisan Vikas Society (GKVS) in 2006, we were confronted with some of the most pressing challenges facing the Himalayan region—continuous rural migration, depletion of traditional water sources, declining agricultural productivity, and the recurring impact of natural disasters.

I have always believed that sustainable development in the mountains cannot be achieved through external models alone. It must be built upon our traditional knowledge, local resources, and active community participation. Guided by this belief, GKVS has focused its efforts on six fundamental pillars that form the foundation of rural development: Water, Forests, Land, People, Livestock, and Disaster Resilience.

Our journey over the past two decades has demonstrated that when rural communities—especially women and youth—are provided with the right opportunities, skills, and resources, they possess the ability to transform their own futures. From the rejuvenation of traditional water sources and promotion of organic and natural farming practices to the empowerment of women through Self-Help Groups (SHGs) and providing support during times of disaster, GKVS has continuously worked to strengthen the confidence and self-reliance of rural communities.

As we look toward the future, our vision extends beyond traditional livelihood development. We are committed to transforming the villages of Uttarakhand into Smart, Digital, and Climate-Resilient Villages. By integrating modern agricultural technologies, strengthening market linkages, promoting organic certification, and advancing environmental conservation initiatives such as pine needle utilization, afforestation, and watershed management, we are creating new pathways for sustainable rural prosperity.

I extend my heartfelt gratitude to our partners, government departments, corporate supporters, and above all, the rural communities whose trust and participation have made this journey possible. Together, let us continue building an Uttarakhand where our water remains pure, our forests remain protected, our land remains fertile, and our people become truly self-reliant and prosperous.

Thank you for your continued support and commitment.

Praveen Singh Bhandari

Founder/Director/CEO

Gramin Kisan Vikas Society (GKVS)

Uttarakhand

NOTE FROM OUR STAFF

As a team, we take immense pride in the work we do at GKVS. Every initiative we undertake is driven by a shared commitment to empowering rural communities and fostering sustainable development. From water conservation efforts to skill-building programs, we have seen firsthand the impact of collective action.

Our journey has been one of learning, collaboration, and resilience. The dedication of our volunteers, field workers, and community leaders has been the backbone of our success. Together, we have transformed challenges into opportunities, ensuring that every individual we support moves closer to self-reliance.

Looking ahead, we remain committed to expanding our reach, strengthening our programs, and deepening our engagement with the communities we serve. With teamwork and determination, we believe that lasting change is not just possible—it is inevitable.



OUR PRESENCE IN INDIA



12000+
Farmer
Connected



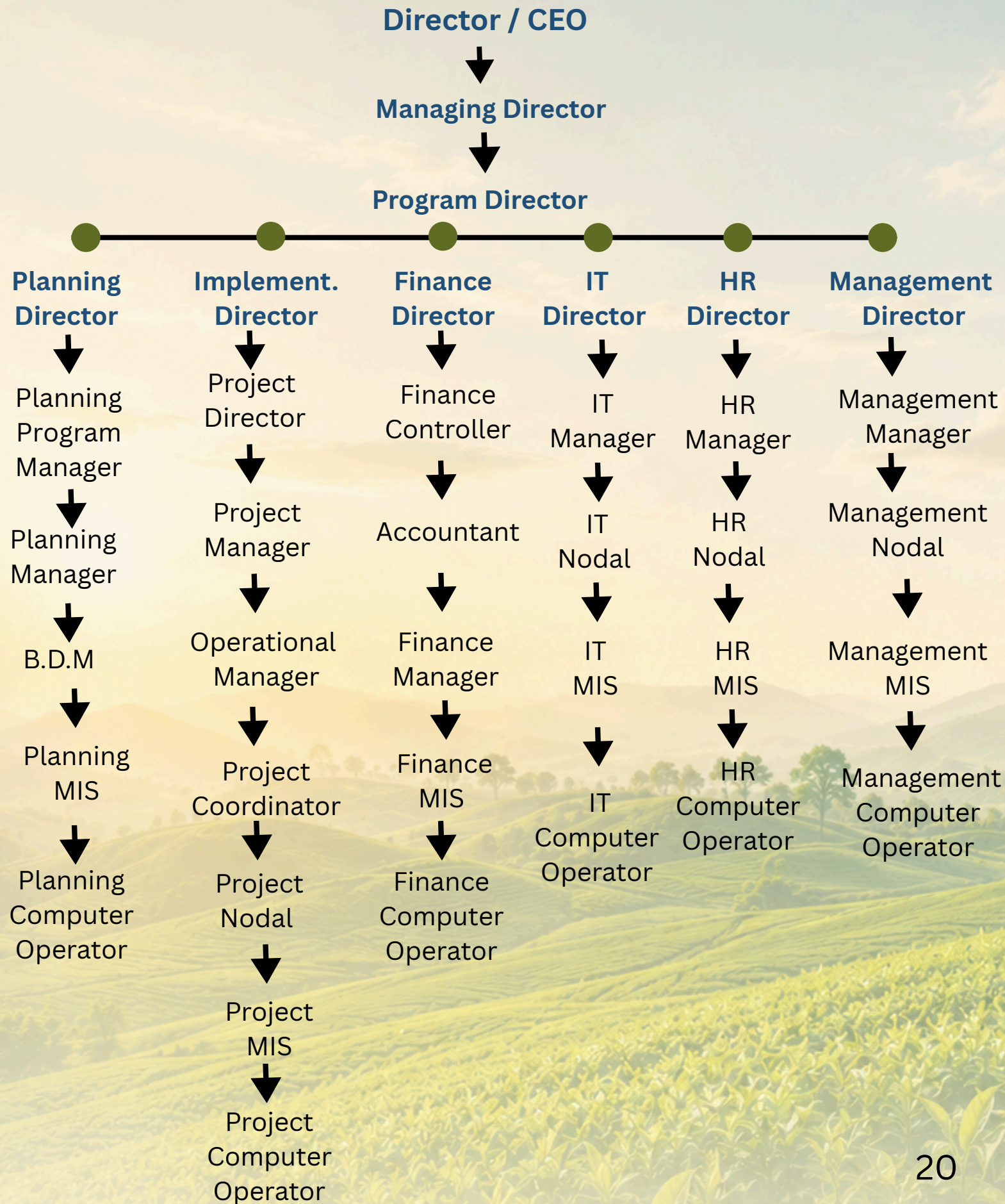
50000+
Beneficiary



15000+
Villages
Connected

ORGANIZATION STRUCTURE

The following diagram shows the present organization structure of Gramin Kishan Vikas Society (GKVS).



HUMAN RESOURCE

Gramin Kisan Vikas Society (GKVS) have well qualified experienced resources pool of experts i.e., Development practitioners, technical experts working with the organization since long time.

The details of the present strength of the organization are given as follows:

SR. No.	NAME	DESIGNATION
1	Mrs. Hemlata Sati	Managing Director
2	Mrs. Ram Kumari	Finance Director
3	Mr. Sidhartha Sharma	BID (Manager)
4	Mr. Kamal Bhan	Director P.S
5	Mrs. Sunita Negi	Project M.I.S
6	Mr. Ritesh Arora	Project M.I.S Coordinator
7	Mr. Nikhil Morya	Account M.I.S
8	Mr. Vikash Nautiyal	Project Manager (SARA)
9	Mr. Harimohan Chauchan	Block Coordinator
10	Mr. Sidharth Arya	Project Field Nodal
11	Mr. Nirmal Singh	Business Development Manager
12	Mr. Deepak Sharma	Business Development Manager
13	Mr. Mayank Garg	IT (MIS)
14	Mr. Veerandra Prasad	Business Development Manager
15	Mr. Rahul Joshi	HR MIS
16	Ms. Soniya	Front Office Executive
17	Mr. Vivek Mondal	Progarm Manager
18	Mr. Vikas Khanna	Project Block Coordinator
19	Mr. Shaditta Bakshi	Hydrogeologist
20	Mr. Vipin Bharti	Field Staff
21	Mr. Munna Ram	Field Staff
22	Mr. Jaypal Panwar	Field Staff

23	Mr. Dinesh	Field Staff
24	Mr. Shurveer Chauhan	Field Staff
25	Mr. Shashank Negi	Volunteer
26	Ms. Heemani Rawat	Volunteer
27	Mr. Mukesh Singh	Volunteer
28	Mr. Chandra Shakher	Volunteer
29	Mr. Anil kumar	Volunteer
30	Mr. Rohit Kumar	Volunteer
31	Ms. Aarti	Volunteer

OUR PARTNERS



जल शक्ति मंत्रालय
MINISTRY OF
JAL SHAKTI

सत्यमेव जयते



POWER TRANSMISSION CORPORATION
OF UTTARAKHAND LIMITED



NABARD



23

उत्तराखण्ड राज्य

OUR CERTIFICATIONS

CERTIFICATE

This is to Certify that the
Anti-bribery management systems — Requirements with guidance for use

of
GRAMIN KISHAN VIKAS SOCIETY
TINGADA, PO- BHIGUN, GHANSALL, TEHRI GARHWAL- 249155, UTTARAKHAND

Has been independently assessed and is compliant with the requirements of
ISO 37001:2025

This certificate is applicable to the following product or service ranges :

TRANSPARENCY IN GOVERNMENT & CSR FUNDS; ANTI-BRIBERY POLICIES; ETHICAL FUND MANAGEMENT; RISK ASSESSMENT; DUE DILIGENCE; INTERNAL CONTROLS; FINANCIAL TRANSPARENCY; COMPLIANCE MONITORING, AUDIT & REPORTING; FRAUD PREVENTION; GOVERNANCE & ACCOUNTABILITY SYSTEMS.

:: Certificate No :: IQMCB1064B

Date of initial registration 22nd April, 2026
Date of this certificate 22nd April, 2026
Surveillance audit on or before 21st April, 2027
Certificate Expiry / Recertification Due 22nd March, 2029

This Certificate is property of International Quality Management Certification Board, USA and Assessment and Evaluation done by Starviz Quality Certification Private Limited, India. Certifications and remains valid subject to satisfactory surveillance audits.

Director

For verification and updated information concerning the present certificate, This Certificate is the property of International Quality Management Certification Board, USA and shall be returned immediately when demanded.

International Quality Management Certification Board, USA
16192 Coastal Hwy, DE 19958, United States
Phone: +1 302-645-7400
E-mail: info@iqmcbusa.org
Web: www.iqmcbusa.org

CERTIFICATE

This is to Certify that the
Information security, cybersecurity and privacy protection — Information security management systems — Requirements

of
GRAMIN KISHAN VIKAS SOCIETY
TINGADA, PO- BHIGUN, GHANSALL, TEHRI GARHWAL- 249155, UTTARAKHAND

Has been independently assessed and is compliant with the requirements of
ISO/IEC 27001:2022

This certificate is applicable to the following product or service ranges :

PROTECTION OF BENEFICIARY & DONOR DATA; DATA PRIVACY & CONFIDENTIALITY; SECURE IT SYSTEMS; ACCESS CONTROL; CYBERSECURITY RISK MANAGEMENT; BACKUP & RECOVERY; BUSINESS CONTINUITY; SECURE COMMUNICATION; LEGAL COMPLIANCE; MONITORING & AUDIT; INFORMATION SECURITY CONTROLS.

:: Certificate No :: IQMCB1063B

Date of initial registration 22nd April, 2026
Date of this certificate 22nd April, 2026
Surveillance audit on or before 21st April, 2027
Certificate Expiry / Recertification Due 21st April, 2029

This Certificate is property of International Quality Management Certification Board, USA and Assessment and Evaluation done by Starviz Quality Certification Private Limited, India. Certifications and remains valid subject to satisfactory surveillance audits.

Director

For verification and updated information concerning the present certificate, This Certificate is the property of International Quality Management Certification Board, USA and shall be returned immediately when demanded.

International Quality Management Certification Board, USA
16192 Coastal Hwy, DE 19958, United States
Phone: +1 302-645-7400
E-mail: info@iqmcbusa.org
Web: www.iqmcbusa.org

CERTIFICATE

This is to Certify that the
Conformity assessment — Requirements for bodies certifying products, processes and services

of
GRAMIN KISHAN VIKAS SOCIETY
TINGADA, PO- BHIGUN, GHANSALL, TEHRI GARHWAL- 249155, UTTARAKHAND

Has been independently assessed and is compliant with the requirements of
ISO/IEC 17065:2012

This certificate is applicable to the following product or service ranges :

INSPECTION & CERTIFICATION SUPPORT; DOCUMENTATION & COMPLIANCE FRAMEWORK; QUALITY SYSTEM IMPLEMENTATION; AUDIT PREPARATION; PROCESS STANDARDIZATION; CERTIFICATION READINESS; GAP ASSESSMENT; VENDOR EVALUATION; RISK & COMPLIANCE MONITORING; TRAINING & CAPACITY BUILDING; CONTINUOUS IMPROVEMENT (EXCLUDING ACCREDITED CERTIFICATION BODY ACTIVITIES).

:: Certificate No :: IQMCB1062B

Date of initial registration 22nd April, 2026
Date of this certificate 22nd April, 2026
Surveillance audit on or before 21st April, 2027
Certificate Expiry / Recertification Due 21st April, 2029

This Certificate is property of International Quality Management Certification Board, USA and Assessment and Evaluation done by Starviz Quality Certification Private Limited, India. Certifications and remains valid subject to satisfactory surveillance audits.

Director

For verification and updated information concerning the present certificate, This Certificate is the property of International Quality Management Certification Board, USA and shall be returned immediately when demanded.

International Quality Management Certification Board, USA
16192 Coastal Hwy, DE 19958, United States
Phone: +1 302-645-7400
E-mail: info@iqmcbusa.org
Web: www.iqmcbusa.org

CERTIFICATE

This is to Certify that the
Guidance on Social Responsibility

of
GRAMIN KISHAN VIKAS SOCIETY
TINGADA, PO- BHIGUN, GHANSALL, TEHRI GARHWAL- 249155, UTTARAKHAND.

Has been independently assessed and is compliant with the requirements of
ISO 26000:2010

This certificate is applicable to the following product or service ranges :

NOO CREDIBILITY & CSR ALIGNMENT; GOVERNANCE & ETHICS; STAKEHOLDER ENGAGEMENT; HUMAN RIGHTS & LABOUR PRACTICES; GENDER & INCLUSION; COMMUNITY DEVELOPMENT; HEALTH, EDUCATION & WELFARE PROGRAMS; CSR STRATEGY; SOCIAL IMPACT ASSESSMENT; MEL SYSTEMS; ESG ALIGNMENT; DONOR REPORTING; GRIEVANCE SYSTEMS; PARTNERSHIP DEVELOPMENT; SOCIAL AUDIT; SUSTAINABILITY PRACTICES.

:: Certificate No :: IQMCB1667C

Date of initial registration 22nd April, 2026
Date of this certificate 22nd April, 2026
Surveillance audit on or before 21st April, 2027
Certificate Expiry / Recertification Due 22nd April, 2029

This Certificate is property of International Quality Management Certification Board, USA and Assessment and Evaluation done by Starviz Quality Certification Private Limited, India. Certifications and remains valid subject to satisfactory surveillance audits.

Director

For verification and updated information concerning the present certificate, This Certificate is the property of International Quality Management Certification Board, USA and shall be returned immediately when demanded.

International Quality Management Certification Board, USA
16192 Coastal Hwy, DE 19958, United States
Phone: +1 302-645-7400
E-mail: info@iqmcbusa.org
Web: www.iqmcbusa.org

CERTIFICATE

THIS IS TO CERTIFY THAT THE
Environmental Management Systems

of
GRAMIN KISHAN VIKAS SOCIETY
TINGADA, PO- BHIGUN, GHANSALL, TEHRI GARHWAL- 249155, UTTARAKHAND.

Has been independently assessed and is compliant with the requirements of
ISO 14001:2015

This certificate is applicable to the following product or service ranges :

ENVIRONMENTAL COMPLIANCE FOR WATER, PLANTATION & RURAL PROJECTS; EIA & BASELINE STUDIES; WASTE RESOURCE MANAGEMENT; PLANTATION & AFForestation; SOIL CONSERVATION; WATER MANAGEMENT; POLLUTION CONTROL; AIR, WATER, SOIL MONITORING; CLIMATE CHANGE & SUSTAINABILITY; BIODIVERSITY CONSERVATION; SUSTAINABLE AGRICULTURE; ENVIRONMENTAL RISK ASSESSMENT; LEGAL COMPLIANCE; ENVIRONMENTAL AUDITS; ESG FRAMEWORK; COMMUNITY AWARENESS; DOCUMENTATION & EMS IMPLEMENTATION; MONITORING & CONTINUOUS IMPROVEMENT.

:: Certificate No :: IQMCB1665C

Date of initial registration 22nd April, 2026
Date of this certificate 22nd April, 2026
Surveillance audit on or before 21st April, 2027
Certificate Expiry / Recertification Due 21st April, 2029

This Certificate is property of International Quality Management Certification Board, USA and Assessment and Evaluation done by Starviz Quality Certification Private Limited, India. Certifications and remains valid subject to satisfactory surveillance audits.

Director

For verification and updated information concerning the present certificate, This Certificate is the property of International Quality Management Certification Board, USA and shall be returned immediately when demanded.

International Quality Management Certification Board, USA
16192 Coastal Hwy, DE 19958, United States
Phone: +1 302-645-7400
E-mail: info@iqmcbusa.org
Web: www.iqmcbusa.org

CERTIFICATE

THIS IS TO CERTIFY THAT THE
Occupational Health & Safety Management System

of
GRAMIN KISHAN VIKAS SOCIETY
TINGADA, PO- BHIGUN, GHANSALL, TEHRI GARHWAL- 249155, UTTARAKHAND.

Has been independently assessed and is compliant with the requirements of
ISO 45001:2018

This certificate is applicable to the following product or service ranges :

WORKPLACE SAFETY MANAGEMENT; HAZARD IDENTIFICATION & RISK ASSESSMENT; DURAL; LEGAL COMPLIANCE; SAFETY TRAINING & AWARENESS; PPE MANAGEMENT; EMERGENCY PREPAREDNESS; INCIDENT REPORTING & INVESTIGATION; OPERATIONAL SAFETY CONTROLS; CONTRACTOR SAFETY; MONITORING & SAFETY KPIs; INTERNAL AUDIT; CSR SAFETY COMPLIANCE; CONTINUOUS IMPROVEMENT.

:: Certificate No :: IQMCB1666C

Date of initial registration 22nd April, 2026
Date of this certificate 22nd April, 2026
Surveillance audit on or before 21st April, 2027
Certificate Expiry / Recertification Due 22nd April, 2029

This Certificate is property of International Quality Management Certification Board, USA and Assessment and Evaluation done by Starviz Quality Certification Private Limited, India. Certifications and remains valid subject to satisfactory surveillance audits.

Director

For verification and updated information concerning the present certificate, This Certificate is the property of International Quality Management Certification Board, USA and shall be returned immediately when demanded.

International Quality Management Certification Board, USA
16192 Coastal Hwy, DE 19958, United States
Phone: +1 302-645-7400
E-mail: info@iqmcbusa.org
Web: www.iqmcbusa.org

UDYAM REGISTRATION CERTIFICATE

UDYAM REGISTRATION NUMBER: UDYAM UK 68-011792

NAME OF ENTERPRISE: GRAMIN KISHAN VIKAS SOCIETY

TYPE OF ENTERPRISE: MSME

MAJOR ACTIVITY: SERVICES

SOCIAL CATEGORY OF ENTREPRENEUR: GENERAL

NAME OF ENTIT: 1. Bhaskar Choudhary & Sill Education

OFFICE ADDRESS OF ENTERPRISE: 1. Village: Tera, 2. Post: 16192 Coastal Hwy, DE 19958, United States, 3. District: Dehra Dun, 4. State: Uttarakhand, 5. Pin: 249155, 6. India, 7. Email: info@iqmcbusa.org, 8. Web: www.iqmcbusa.org

DATE OF INCORPORATION/REGISTRATION OF ENTERPRISE: 08-09-2006

DATE OF COMMENCEMENT OF PRODUCTION BUSINESS: 16-09-2007

NATIONAL INDUSTRY CLASSIFICATION CODES: 1. Activity of kind of office, management and maintenance activities: 8810, 2. Support activities: 8820, 3. Support activities: 8830, 4. Support activities: 8840, 5. Support activities: 8850, 6. Support activities: 8860, 7. Support activities: 8870, 8. Support activities: 8880, 9. Support activities: 8890, 10. Support activities: 8900, 11. Support activities: 8910, 12. Support activities: 8920, 13. Support activities: 8930, 14. Support activities: 8940, 15. Support activities: 8950, 16. Support activities: 8960, 17. Support activities: 8970, 18. Support activities: 8980, 19. Support activities: 8990, 20. Support activities: 9000, 21. Support activities: 9010, 22. Support activities: 9020, 23. Support activities: 9030, 24. Support activities: 9040, 25. Support activities: 9050, 26. Support activities: 9060, 27. Support activities: 9070, 28. Support activities: 9080, 29. Support activities: 9090, 30. Support activities: 9100, 31. Support activities: 9110, 32. Support activities: 9120, 33. Support activities: 9130, 34. Support activities: 9140, 35. Support activities: 9150, 36. Support activities: 9160, 37. Support activities: 9170, 38. Support activities: 9180, 39. Support activities: 9190, 40. Support activities: 9200, 41. Support activities: 9210, 42. Support activities: 9220, 43. Support activities: 9230, 44. Support activities: 9240, 45. Support activities: 9250, 46. Support activities: 9260, 47. Support activities: 9270, 48. Support activities: 9280, 49. Support activities: 9290, 50. Support activities: 9300, 51. Support activities: 9310, 52. Support activities: 9320, 53. Support activities: 9330, 54. Support activities: 9340, 55. Support activities: 9350, 56. Support activities: 9360, 57. Support activities: 9370, 58. Support activities: 9380, 59. Support activities: 9390, 60. Support activities: 9400, 61. Support activities: 9410, 62. Support activities: 9420, 63. Support activities: 9430, 64. Support activities: 9440, 65. Support activities: 9450, 66. Support activities: 9460, 67. Support activities: 9470, 68. Support activities: 9480, 69. Support activities: 9490, 70. Support activities: 9500, 71. Support activities: 9510, 72. Support activities: 9520, 73. Support activities: 9530, 74. Support activities: 9540, 75. Support activities: 9550, 76. Support activities: 9560, 77. Support activities: 9570, 78. Support activities: 9580, 79. Support activities: 9590, 80. Support activities: 9600, 81. Support activities: 9610, 82. Support activities: 9620, 83. Support activities: 9630, 84. Support activities: 9640, 85. Support activities: 9650, 86. Support activities: 9660, 87. Support activities: 9670, 88. Support activities: 9680, 89. Support activities: 9690, 90. Support activities: 9700, 91. Support activities: 9710, 92. Support activities: 9720, 93. Support activities: 9730, 94. Support activities: 9740, 95. Support activities: 9750, 96. Support activities: 9760, 97. Support activities: 9770, 98. Support activities: 9780, 99. Support activities: 9790, 100. Support activities: 9800, 101. Support activities: 9810, 102. Support activities: 9820, 103. Support activities: 9830, 104. Support activities: 9840, 105. Support activities: 9850, 106. Support activities: 9860, 107. Support activities: 9870, 108. Support activities: 9880, 109. Support activities: 9890, 110. Support activities: 9900, 111. Support activities: 9910, 112. Support activities: 9920, 113. Support activities: 9930, 114. Support activities: 9940, 115. Support activities: 9950, 116. Support activities: 9960, 117. Support activities: 9970, 118. Support activities: 9980, 119. Support activities: 9990, 120. Support activities: 0000, 121. Support activities: 0010, 122. Support activities: 0020, 123. Support activities: 0030, 124. Support activities: 0040, 125. Support activities: 0050, 126. Support activities: 0060, 127. Support activities: 0070, 128. Support activities: 0080, 129. Support activities: 0090, 130. Support activities: 0100, 131. Support activities: 0110, 132. Support activities: 0120, 133. Support activities: 0130, 134. Support activities: 0140, 135. Support activities: 0150, 136. Support activities: 0160, 137. Support activities: 0170, 138. Support activities: 0180, 139. Support activities: 0190, 140. Support activities: 0200, 141. Support activities: 0210, 142. Support activities: 0220, 143. Support activities: 0230, 144. Support activities: 0240, 145. Support activities: 0250, 146. Support activities: 0260, 147. Support activities: 0270, 148. Support activities: 0280, 149. Support activities: 0290, 150. Support activities: 0300, 151. Support activities: 0310, 152. Support activities: 0320, 153. Support activities: 0330, 154. Support activities: 0340, 155. Support activities: 0350, 156. Support activities: 0360, 157. Support activities: 0370, 158. Support activities: 0380, 159. Support activities: 0390, 160. Support activities: 0400, 161. Support activities: 0410, 162. Support activities: 0420, 163. Support activities: 0430, 164. Support activities: 0440, 165. Support activities: 0450, 166. Support activities: 0460, 167. Support activities: 0470, 168. Support activities: 0480, 169. Support activities: 0490, 170. Support activities: 0500, 171. Support activities: 0510, 172. Support activities: 0520, 173. Support activities: 0530, 174. Support activities: 0540, 175. Support activities: 0550, 176. Support activities: 0560, 177. Support activities: 0570, 178. Support activities: 0580, 179. Support activities: 0590, 180. Support activities: 0600, 181. Support activities: 0610, 182. Support activities: 0620, 183. Support activities: 0630, 184. Support activities: 0640, 185. Support activities: 0650, 186. Support activities: 0660, 187. Support activities: 0670, 188. Support activities: 0680, 189. Support activities: 0690, 190. Support activities: 0700, 191. Support activities: 0710, 192. Support activities: 0720, 193. Support activities: 0730, 194. Support activities: 0740, 195. Support activities: 0750, 196. Support activities: 0760, 197. Support activities: 0770, 198. Support activities: 0780, 199. Support activities: 0790, 180. Support activities: 0800, 181. Support activities: 0810, 182. Support activities: 0820, 183. Support activities: 0830, 184. Support activities: 0840, 185. Support activities: 0850, 186. Support activities: 0860, 187. Support activities: 0870, 188. Support activities: 0880, 189. Support activities: 0890, 190. Support activities: 0900, 191. Support activities: 0910, 192. Support activities: 0920, 193. Support activities: 0930, 194. Support activities: 0940, 195. Support activities: 0950, 196. Support activities: 0960, 197. Support activities: 0970, 198. Support activities: 0980, 199. Support activities: 0990, 200. Support activities: 1000, 201. Support activities: 1010, 202. Support activities: 1020, 203. Support activities: 1030, 204. Support activities: 1040, 205. Support activities: 1050, 206. Support activities: 1060, 207. Support activities: 1070, 208. Support activities: 1080, 209. Support activities: 1090, 210. Support activities: 1100, 211. Support activities: 1110, 212. Support activities: 1120, 213. Support activities: 1130, 214. Support activities: 1140, 215. Support activities: 1150, 216. Support activities: 1160, 217. Support activities: 1170, 218. Support activities: 1180, 219. Support activities: 1190, 220. Support activities: 1200, 221. Support activities: 1210, 222. Support activities: 1220, 223. Support activities: 1230, 224. Support activities: 1240, 225. Support activities: 1250, 226. Support activities: 1260, 227. Support activities: 1270, 228. Support activities: 1280, 229. Support activities: 1290, 230. Support activities: 1300, 231. Support activities: 1310, 232. Support activities: 1320, 233. Support activities: 1330, 234. Support activities: 1340, 235. Support activities: 1350, 236. Support activities: 1360, 237. Support activities: 1370, 238. Support activities: 1380, 239. Support activities: 1390, 240. Support activities: 1400, 241. Support activities: 1410, 242. Support activities: 1420, 243. Support activities: 1430, 244. Support activities: 1440, 245. Support activities: 1450, 246. Support activities: 1460, 247. Support activities: 1470, 248. Support activities: 1480, 249. Support activities: 1490, 250. Support activities: 1500, 251. Support activities: 1510, 252. Support activities: 1520, 253. Support activities: 1530, 254. Support activities: 1540, 255. Support activities: 1550, 256. Support activities: 1560, 257. Support activities: 1570, 258. Support activities: 1580, 259. Support activities: 1590, 260. Support activities: 1600, 261. Support activities: 1610, 262. Support activities: 1620, 263. Support activities: 1630, 264. Support activities: 1640, 265. Support activities: 1650, 266. Support activities: 1660, 267. Support activities: 1670, 268. Support activities: 1680, 269. Support activities: 1690, 270. Support activities: 1700, 271. Support activities: 1710, 272. Support activities: 1720, 273. Support activities: 1730, 274. Support activities: 1740, 275. Support activities: 1750, 276. Support activities: 1760, 277. Support activities: 1770, 278. Support activities: 1780, 279. Support activities: 1790, 280. Support activities: 1800, 281. Support activities: 1810, 282. Support activities: 1820, 283. Support activities: 1830, 284. Support activities: 1840, 285. Support activities: 1850, 286. Support activities: 1860, 287. Support activities: 1870, 288. Support activities: 1880, 289. Support activities: 1890, 290. Support activities: 1900, 291. Support activities: 1910, 292. Support activities: 1920, 293. Support activities: 1930, 294. Support activities: 1940, 295. Support activities: 1950, 296. Support activities: 1960, 297. Support activities: 1970, 298. Support activities: 1980, 299. Support activities: 1990, 300. Support activities: 2000, 301. Support activities: 2010, 302. Support activities: 2020, 303. Support activities: 2030, 304. Support activities: 2040, 305. Support activities: 2050, 306. Support activities: 2060, 307. Support activities: 2070, 308. Support activities: 2080, 309. Support activities: 2090, 310. Support activities: 2100, 311. Support activities: 2110, 312. Support activities: 2120, 313. Support activities: 2130, 314. Support activities: 2140, 315. Support activities: 2150, 316. Support activities: 2160, 317. Support activities: 2170, 318. Support activities: 2180, 319. Support activities: 2190, 320. Support activities: 2200, 321. Support activities: 2210, 322. Support activities: 2220, 323. Support activities: 2230, 324. Support activities: 2240, 325. Support activities: 2250, 326. Support activities: 2260, 327. Support activities: 2270, 328. Support activities: 2280, 329. Support activities: 2290, 330. Support activities: 2300, 331. Support activities: 2310, 332. Support activities: 2320, 333. Support activities: 2330, 334. Support activities: 2340, 335. Support activities: 2350, 336. Support activities: 2360, 337. Support activities: 2370, 338. Support activities: 2380, 339. Support activities: 2390, 340. Support activities: 2400, 341. Support activities: 2410, 342. Support activities: 2420, 343. Support activities: 2430, 344. Support activities: 2440, 345. Support activities: 2450, 346. Support activities: 2460, 347. Support activities: 2470, 348. Support activities: 2480, 349. Support activities: 2490, 350. Support activities: 2500, 351. Support activities: 2510, 352. Support activities: 2520, 353. Support activities: 2530, 354. Support activities: 2540, 355. Support activities: 2550, 356. Support activities: 2560, 357. Support activities: 2570, 358. Support activities: 2580, 359. Support activities: 2590, 360. Support activities: 2600, 361. Support activities: 2610, 362. Support activities: 2620, 363. Support activities: 2630, 364. Support activities: 2640, 365. Support activities: 2650, 366. Support activities: 2660, 367. Support activities: 2670, 368. Support activities: 2680, 369. Support activities: 2690, 370. Support activities: 2700, 371. Support activities: 2710, 372. Support activities: 2720, 373. Support activities: 2730, 374. Support activities: 2740, 375. Support activities: 2750, 376. Support activities: 2760, 377. Support activities: 2770, 378. Support activities: 2780, 379. Support activities: 2790, 380. Support activities: 2800, 381. Support activities: 2810, 382. Support activities: 2820, 383. Support activities: 2830, 384. Support activities: 2840, 385. Support activities: 2850, 386. Support activities: 2860, 387. Support activities: 2870, 388. Support activities: 2880, 389. Support activities: 2890, 390. Support activities: 2900, 391. Support activities: 2910, 392. Support activities: 2920, 393. Support activities: 2930, 394. Support activities: 2940, 395. Support activities: 2950, 396. Support activities: 2960, 397. Support activities: 2970, 398. Support activities: 2980, 399. Support activities: 2990, 400. Support activities: 3000, 401. Support activities: 3010, 402. Support activities: 3020, 403. Support activities: 3030, 404. Support activities: 3040, 405. Support activities: 3050, 406. Support activities: 3060, 407. Support activities: 3070, 408. Support activities: 3080, 409. Support activities: 3090, 410. Support activities: 3100, 411. Support activities: 3110, 412. Support activities: 3120, 413. Support activities: 3130, 414. Support activities: 3140, 415. Support activities: 3150, 416. Support activities: 3160, 417. Support activities: 3170, 418. Support activities: 3180, 419. Support activities: 3190, 420. Support activities: 3200, 421. Support activities: 3210, 422. Support activities: 3220, 423. Support activities: 3230, 424. Support activities: 3240, 425. Support activities: 3250, 426. Support activities: 3260, 427. Support activities: 3270, 428. Support activities: 3280, 429. Support activities: 3290, 430. Support activities: 3300, 431. Support activities: 3310, 432. Support activities: 3320, 433. Support activities: 3330, 434. Support activities: 3340, 435. Support activities: 3350, 436. Support activities: 3360, 437. Support activities: 3370, 438. Support activities: 3380, 439. Support activities: 3390, 440. Support activities: 3400, 441. Support activities: 3410, 442. Support activities: 3420, 443. Support activities: 3430, 444. Support activities: 3440, 445. Support activities: 3450, 446. Support activities: 3460, 447. Support activities: 3470, 448. Support activities: 3480, 449. Support activities: 3490, 450. Support activities: 3500, 451. Support activities: 3510, 452. Support activities: 3520, 453. Support activities: 3530, 454. Support activities: 3540, 455. Support activities: 3550, 456. Support activities: 3560, 457. Support activities: 3570, 458. Support activities: 3580, 459. Support activities: 3590, 460. Support activities: 3600, 461. Support activities: 3610, 462. Support activities: 3620, 463. Support activities: 3630, 464. Support activities: 3640, 465. Support activities: 3650, 466. Support activities: 3660, 467. Support activities: 3670, 468. Support activities: 3680, 469. Support activities: 3690, 470. Support activities: 3700, 471. Support activities: 3710, 472. Support activities: 3720, 473. Support activities: 3730, 474. Support activities: 3740, 475. Support activities: 3750, 476. Support activities: 3760, 477. Support activities: 3770, 478. Support activities: 3780, 479. Support activities: 3790, 480. Support activities: 3800, 481. Support activities: 3810, 482. Support activities: 3820, 483. Support activities: 3830, 484. Support activities: 3840, 485. Support activities: 3850, 486. Support activities: 3860, 487. Support activities: 3870, 488. Support activities: 3880, 489. Support activities: 3890, 490. Support activities: 3900, 491. Support activities: 3910, 492. Support activities: 3920, 493. Support activities: 3930, 494. Support activities: 3940, 495. Support activities: 3950, 496. Support activities: 3960, 497. Support activities: 3970, 498. Support activities: 3980, 499. Support activities: 3990, 500. Support activities: 4000, 501. Support activities: 4010, 502. Support activities: 4020, 503. Support activities: 4030, 504. Support activities: 4040, 505. Support activities: 4050, 506. Support activities: 4060, 507. Support activities: 4070, 508. Support activities: 4080, 509. Support activities: 4090, 510. Support activities: 4100, 511. Support activities: 4110, 512. Support activities: 4120, 513. Support activities: 4130, 514. Support activities: 4140, 515. Support activities: 4150, 516. Support activities: 4160, 517. Support activities: 4170, 518. Support activities: 4180, 519. Support activities: 4190, 520. Support activities: 4200, 521. Support activities: 4210, 522. Support activities: 4220, 523. Support activities: 4230, 524. Support activities: 4240, 525. Support activities: 4250, 526. Support activities: 4260, 527. Support activities: 4270, 528. Support activities: 4280, 529. Support activities: 4290, 530. Support activities: 4300, 531. Support activities: 4310, 532. Support activities: 4320, 533. Support activities: 4330, 534. Support activities: 4340, 535. Support activities: 4350, 536. Support activities: 4360, 537. Support activities: 4370, 538. Support activities: 4380, 539. Support activities: 4390, 540. Support activities: 4400, 541. Support activities: 4410, 542. Support activities: 4420, 543. Support activities: 4430, 544. Support activities: 4440, 545. Support activities: 4450, 546. Support activities: 4460, 547. Support activities: 4470, 548. Support activities: 4480, 549. Support activities: 4490, 550. Support activities: 4500, 551. Support activities: 4510, 552. Support activities: 4520, 553. Support activities: 4530, 554. Support activities: 4540, 555. Support activities: 4550, 556. Support activities: 4560, 557. Support activities: 4570, 558. Support activities: 4580, 559. Support activities: 4590, 560. Support activities: 4600, 561. Support activities: 4610, 562. Support activities: 4620, 563. Support activities: 4630, 564. Support activities: 4640, 565. Support activities: 4650, 566. Support activities: 4660, 567. Support activities: 4670, 568. Support activities: 4680, 569. Support activities: 4690, 570. Support activities: 4700, 571. Support activities: 4710, 572. Support activities: 4720, 573. Support activities: 4730, 574. Support activities: 4740, 575. Support activities: 4750, 576. Support activities: 4760, 577. Support activities: 4770, 578. Support activities: 4780, 579. Support activities: 4790, 580. Support activities: 4800, 581. Support activities: 4810, 582. Support activities: 4820, 583. Support activities: 4830, 584. Support activities: 4840, 585. Support activities: 4850, 586. Support activities: 4860, 587. Support activities: 4870, 588. Support activities: 4880, 589. Support activities: 4890, 590. Support activities: 4900, 591. Support activities: 4910, 592. Support activities: 4920, 593. Support activities: 4930, 594. Support activities: 4940, 595. Support activities: 4950, 596. Support activities: 4960, 597. Support activities: 4970, 598. Support activities: 4980, 599. Support activities: 4990, 600. Support activities: 5000, 601. Support activities: 5010, 602. Support activities: 5020, 603. Support activities: 5030, 604. Support activities: 5040, 605. Support activities: 5050, 606. Support activities: 5060, 607. Support activities: 5070, 608. Support activities: 5

WORK AREA

AGRICULTURE DEPARTMENT

S.No.	Year	Department / Organization	Project / Program	Work Details
1	2025-26	Organic Board	PMKY Traditional Agriculture Development Scheme	Facilitating multi-stakeholder grassroots community mobilization campaigns to drive critical behavioral changes and address urgent local public welfare concerns.
2	2025-26	Organic Product Council	PKVY Agriculture Project	Promoting eco-friendly river-basin agriculture through Paramparagat Krishi Vikas Yojana (PKVY) by training farmers in chemical-free multi-cropping and organic bio-inputs.

FOREST DEPARTMENT

S.No.	Year	Department / Organization	Project / Program	Work Details
1	2022-23	Forest Department	Microplan Rudraprayag	Formulating micro-level village geographical resource mapping, socioeconomic surveys, and environmental conservation microplans across Rudraprayag.

2	2024-25	Forest Division Chakrata	Handicraft Program	Organizing skill-development workshops focused on local traditional handicrafts to create sustainable cottage industry employment opportunities for rural artisans.
3	2024-25	Forest Division Kalsi	Green India Mission	Mobilizing rural communities under the Green India Mission to conduct structural afforestation drives, degraded forest ecosystem restoration, and green-cover expansion.
4	2024-25	Forest Division Tehri Garhwal	22 Training Programs	Imparting comprehensive technical skill development, structural workshop training, and localized public awareness campaigns to foster socio-economic self-reliance.
5	2025-26	Directorate of Herbal & Aroma Tourism, Dehradun	Herbal & Aroma Tourism Program	Conducting technical agronomic training on high-value herbal cultivation, organic nursery setup, and post-harvest management of aromatic cash crops.
6	2025-26	Forest Officer, Gopeshwar Chamoli	Herbal Plantation Technical Training	Conducting technical agronomic training on high-value herbal cultivation, organic nursery setup, and post-harvest management of aromatic cash crops.
7	2026-27	Alaknanda Land Conservation Forest Division Chamoli	Microplan	Conducting comprehensive village geographical asset mapping, forest boundary surveys, and drafting microplans for localized resource management. 26

8	2026-27	Forest Division Badrinath, Chamoli	Microplan	Conducting comprehensive village geographical asset mapping, forest boundary surveys, and drafting microplans for localized resource management.
9	2026-27	Forest Officer Agastmuni Forest Area	10 Microplans	Conducting deep baseline diagnostic studies and preparing 10 village environmental conservation microplans to promote localized sustainable livelihood development.
10	2026-27	Forest Officer Rudraprayag	9 Microplans	Formulating 9 distinct rural microplans emphasizing natural resource management, ecological preservation, and village infrastructure gap assessments.

MINORITY WELFARE DEPARTMENT

S.No.	Year	Department / Organization	Project / Program	Work Details
1	2016-17	Minority Ministry	Skill Development for 125 Minority Women	Imparting comprehensive technical skill development, structural workshop training, and localized public awareness campaigns to foster socio-economic self-reliance.
2	2024-25	Minority Welfare & Waqf Development Corporation	Jute Bag Making	Providing end-to-end practical skill development sessions covering jute bag cutting, commercial design stitching, and eco-friendly packaging market connections.

3	2025-26	Minority Department	Jute Bag Training	Providing end-to-end practical skill development sessions covering jute bag cutting, commercial design stitching, and eco-friendly packaging market connections.
4	2025-26	Minority Department	Agarbatti Making	Imparting specialized training for cottage-scale incense stick (agarbatti) manufacturing, processing, raw material sourcing, and value chain optimization.
5	2025-26	Minority Department	Fashion Designing	Imparting comprehensive technical skill development, structural workshop training, and localized public awareness campaigns to foster socio-economic self-reliance.

NABARD DEPARTMENT

S.No.	Year	Department / Organization	Project / Program	Work Details
1	2009	NABARD	SHG Group Formation	Facilitating grassroots economic empowerment through community mobilization, formal SHG creation, and essential savings-and-credit group linkings.
2	2009	NABARD	Sheep & Rabbit Related Work	Facilitating multi-stakeholder grassroots community mobilization campaigns to drive critical behavioral changes and address urgent local public welfare concerns.

3	2010	NABARD	Formation of Farmer Clubs	Facilitating multi-stakeholder grassroots community mobilization campaigns to drive critical behavioral changes and address urgent local public welfare concerns.
4	2010	NABARD	100 Self Help Groups	Mobilizing, institutionalizing, and establishing 100 rural Self-Help Groups (SHGs) to stimulate micro-credit linkages and community-driven employment models.
5	2010-11	NABARD	SHG Training & Livelihood Development	Facilitating grassroots economic empowerment through community mobilization, formal SHG creation, and essential savings-and-credit group linkings.
6	2012-13	NABARD	MEDP Program	Imparting comprehensive technical skill development, structural workshop training, and localized public awareness campaigns to foster socio-economic self-reliance.
7	2010-11	NABARD	50 Self Help Groups	Promoting community financial inclusion through the formation, bank-linking, and seed-funding coordination of 50 rural women's Self-Help Groups (SHGs).
8	2010-11	NABARD	MEDP Training Program	Imparting comprehensive technical skill development, structural workshop training, and localized public awareness campaigns to foster socio-economic self-reliance.

9	2010-11	NABARD	High Altitude Herbal Farming Project (305 beneficiary families)	Implementing specialized high-altitude medicinal herb cultivation techniques and providing processing infrastructure support to 305 targeted hill families.
10	2010-11	NABARD	Financial Literacy in 7 Nyaya Panchayats	Deploying grassroots banking awareness campaigns on rural credit schemes, savings management, and formal digital banking across 7 critical Nyaya Panchayats.
11	2011-12	NABARD	SHG Formation	Facilitating grassroots economic empowerment through community mobilization, formal SHG creation, and essential savings-and-credit group linkings.
12	2011-12	NABARD	SHG Coordination & Association	Facilitating grassroots economic empowerment through community mobilization, formal SHG creation, and essential savings-and-credit group linkings.
13	2011-12	NABARD	Educational Tour (Kullu-Manali, Himachal Pradesh)	Facilitating multi-stakeholder grassroots community mobilization campaigns to drive critical behavioral changes and address urgent local public welfare concerns.
14	2012-13	NABARD	Integrated Sheep & Goat Scheme	Facilitating multi-stakeholder grassroots community mobilization campaigns to drive critical behavioral changes and address urgent local public welfare concerns.

15	2012-13	NABARD	Formation of 150 SHGs	Promoting community financial inclusion through the formation, bank-linking, and seed-funding coordination of 50 rural women's Self-Help Groups (SHGs).
16	2013-14	NABARD	Formation of 306 SHGs	Spearheading a major grassroots livelihood drive to establish and nurture 306 specialized Self-Help Groups (SHGs) for income-generating micro-activities.
17	2014-15	NABARD	Formation of 200 SHGs	Facilitating community-level empowerment through the systematic formation, registration, and training of 200 sustainable women-led Self-Help Groups (SHGs).
18	2015-16	NABARD	MEDP Program	Imparting comprehensive technical skill development, structural workshop training, and localized public awareness campaigns to foster socio-economic self-reliance.
19	2015-16	NABARD	Ringal Training for Women	Imparting comprehensive technical skill development, structural workshop training, and localized public awareness campaigns to foster socio-economic self-reliance.
20	2015-16	NABARD	MEDP Program	Imparting comprehensive technical skill development, structural workshop training, and localized public awareness campaigns to foster socio-economic self-reliance.

21	2015–16	NABARD	FPO Formation	Facilitating multi-stakeholder grassroots community mobilization campaigns to drive critical behavioral changes and address urgent local public welfare concerns.
22	2015–16	NABARD	Street Play Financial Literacy Program	Conducting institutional banking literacy drives, promoting cyber-safety protocols, and installing informative wall-writing across remote habitations.
23	2016–17	NABARD	Literacy Program & Wall Writing	Conducting institutional banking literacy drives, promoting cyber-safety protocols, and installing informative wall-writing across remote habitations.
24	2016–17	NABARD	Jal Doot Program (150 villages)	Deploying dedicated 'Jal Doots' across 150 rural habitations to map local water tables, conduct clean-water testing drives, and run conservation awareness.
25	2017–18	NABARD	Financial Literacy MEDP (Ringal Training)	Conducting institutional banking literacy drives, promoting cyber-safety protocols, and installing informative wall-writing across remote habitations.
26	2018–19	NABARD	Rural Mart Sales Centre	Facilitating multi-stakeholder grassroots community mobilization campaigns to drive critical behavioral changes and address urgent local public welfare concerns.
27	2022–23	NABARD	MEDP (Incense Stick / Agarbatti Training for unemployed youth)	Imparting specialized training for cottage-scale incense stick (agarbatti) manufacturing, processing, raw material sourcing, and value chain optimization.

PANCHAYATI RAJ DEPARTMENT

S.No.	Year	Department / Organization	Project / Program	Work Details
1	2020-21	Panchayati Raj Department	GPDP & 9 Theme Program	Imparting comprehensive technical skill development, structural workshop training, and localized public awareness campaigns to foster socio-economic self-reliance.
2	2022-23	Panchayati Raj Uttarakhand	9 Theme GPDP Training	Imparting comprehensive technical skill development, structural workshop training, and localized public awareness campaigns to foster socio-economic self-reliance.
3	2024-25	Panchayati Raj Directorate	Training Program	Imparting comprehensive technical skill development, structural workshop training, and localized public awareness campaigns to foster socio-economic self-reliance.
4	2025-26	Panchayati Raj Department	Training Program	Imparting comprehensive technical skill development, structural workshop training, and localized public awareness campaigns to foster socio-economic self-reliance.

PETROLEUM MINISTRY (ONGC)

S.No.	Year	Department / Organization	Project / Program	Work Details
1	2017-18	Ministry of Gas & Petroleum, Govt. of India (ONGC Dehradun)	Ujjwala Panchayat Program	Imparting comprehensive technical skill development, structural workshop training, and localized public awareness campaigns to foster socio-economic self-reliance.

WATER RESOURCES (JAL JEEVAN)

S.No.	Year	Department / Organization	Project / Program	Work Details
1	2021-22	Jal Jeevan Mission	Program operations in 800 villages across 13 districts of Uttarakhand	Imparting comprehensive technical skill development, structural workshop training, and localized public awareness campaigns to foster socio-economic self-reliance.
2	2022-23	Namami Gange	PMKY Traditional Agriculture Development Scheme	Facilitating multi-stakeholder grassroots community mobilization campaigns to drive critical behavioral changes and address urgent local public welfare concerns.

U.K MULTIPURPOSE FIN CORPORATION

S.No.	Year	Department / Organization	Project / Program	Work Details
1	2024-25	Uttarakhand Multipurpose Finance & Development Corporation Ltd.	Sewing Training	Conducting intensive technical workshops on textile cutting, commercial stitching, and tailoring to advance financial self-reliance for rural women.
2	2024-25	Uttarakhand Multipurpose Finance & Development Corporation Ltd.	Wood Craft Training	Conducting foundational and advanced wood-craftsmanship training programs to enhance specialized wood carving and traditional carpentry skills among local youth.
3	2024-25	Uttarakhand Multipurpose Finance & Development Corporation Ltd.	Beautician Training	Delivering professional vocational training modules in beauty care, salon management, and cosmetics cosmetology to enable decentralized entrepreneurial ventures.

4	2025-26	Uttarakhand Multipurpose Finance & Development Corporation Ltd.	Sewing Work Training	Conducting intensive technical workshops on textile cutting, commercial stitching, and tailoring to advance financial self-reliance for rural women.
5	2025-26	Uttarakhand Multipurpose Finance & Development Corporation Ltd.	Beautician Training	Delivering professional vocational training modules in beauty care, salon management, and cosmetics cosmetology to enable decentralized entrepreneurial ventures.
6	2026-27	Uttarakhand Multipurpose Finance & Development Corporation Ltd.	Shilpi Gram Scheme (SC/ST) – weaving, handicraft, pottery, embroidery, jute craft, tailoring	Organizing skill-development workshops focused on local traditional handicrafts to create sustainable cottage industry employment opportunities for rural artisans.

OTHER GOVT. DEPARTMENT PROGRAM

S.No.	Year	Department / Organization	Project / Program	Work Details
1	2008-09	Nehru Yuva Kendra	Capacity Development Program	Facilitating multi-stakeholder grassroots community mobilization campaigns to drive critical behavioral changes and address urgent local public welfare concerns.
2	2009-10	State Medicinal Plant Board, Gopeshwar	Capacity Development Program	Facilitating multi-stakeholder grassroots community mobilization campaigns to drive critical behavioral changes and address urgent local public welfare concerns.

3	2009–10	State Medicinal Plant Board, Gopeshwar	Capacity Development Program	Facilitating multi-stakeholder grassroots community mobilization campaigns to drive critical behavioral changes and address urgent local public welfare concerns.
4	2010–11	Rural Development Department	Swarn Jayanti Self Employment Scheme (30 groups)	Facilitating grassroots economic empowerment through community mobilization, formal SHG creation, and essential savings-and-credit group linkings.
5	2017–18	FCRA Fund	School Education Grant	Facilitating multi-stakeholder grassroots community mobilization campaigns to drive critical behavioral changes and address urgent local public welfare concerns.
6	2018–19	PM Skill Development Program	Sewing & Beauty Parlour Training for 220 beneficiaries (Uttarkashi Purola)	Conducting intensive technical workshops on textile cutting, commercial stitching, and tailoring to advance financial self-reliance for rural women.
7	2024–25	Watershed Department	SARA Project	Facilitating multi-stakeholder grassroots community mobilization campaigns to drive critical behavioral changes and address urgent local public welfare concerns.
8	2025–26	THDC	Beautician Training	Delivering professional vocational training modules in beauty care, salon management, and cosmetics cosmetology to enable decentralized entrepreneurial ventures.

SELF-INITIATIVES

S.No.	Year	Department / Organization	Project / Program	Work Details
1	2007-08	Self Initiative	Women Panchayat Formation, Genwali-Pinswar (Liquor Ban Movement)	Facilitating multi-stakeholder grassroots community mobilization campaigns to drive critical behavioral changes and address urgent local public welfare concerns.
2	2007-08	Self Initiative	Village Cleanliness Campaign with boys and girls	Facilitating multi-stakeholder grassroots community mobilization campaigns to drive critical behavioral changes and address urgent local public welfare concerns.
3	2020-21	Self Initiative	Mask Distribution	Facilitating multi-stakeholder grassroots community mobilization campaigns to drive critical behavioral changes and address urgent local public welfare concerns.

Paramparagat Krishi Vikas Yojana

Gramin Kisan Vikas Society (GKVS) has actively supported the implementation of Paramparagat Krishi Vikas Yojana (PKVY) by promoting natural and organic farming practices among rural farmers. The organization works closely with farming communities to reduce dependence on chemical fertilizers and pesticides while encouraging sustainable and eco-friendly agricultural methods.

Under PKVY, GKVS facilitates the formation of farmer groups and clusters, provides awareness and capacity-building programs on organic farming techniques, and assists farmers in adopting traditional agricultural practices that improve soil fertility and crop quality. The organization also supports farmers in maintaining required documentation, internal control systems, and compliance processes necessary for organic certification.



GKVS conducts training programs on compost preparation, vermicomposting, bio-fertilizers, bio-pesticides, crop diversification, soil health management, and water conservation techniques. Through regular field visits, demonstrations, and technical guidance, farmers are encouraged to transition towards chemical-free farming systems that are environmentally sustainable and economically beneficial.

A key focus of GKVS under PKVY is facilitating Organic Certification and Participatory Guarantee System (PGS) Certification, enabling farmers to gain formal recognition for their organic produce. The organization also promotes market linkages, value addition, branding, and awareness of organic products to help farmers access premium markets and improve their incomes.

A key focus of GKVS under PKVY is facilitating Organic Certification and Participatory Guarantee System (PGS) Certification, enabling farmers to gain formal recognition for their organic produce. The organization also promotes market linkages, value addition, branding, and awareness of organic products to help farmers access premium markets and improve their incomes.

Key Contributions of GKVS under PKVY

- Promotion of Natural and Organic Farming Practices.
- Formation and Mobilization of Organic Farmer Clusters.
- Training on Sustainable Agriculture and Soil Health Management.
- Support for PGS and Organic Certification Processes.
- Awareness Programs on Chemical-Free Farming.
- Capacity Building for Farmers and Farmer Producer Groups.
- Facilitation of Market Linkages for Organic Produce.
- Promotion of Environmental Conservation and Biodiversity.
- Enhancement of Farmers' Income through Certified Organic Products.

Jal Jeevan Mission (JJM)

Implemented village-level water management and sanitation programs across 989 villages in 11 districts of Uttarakhand. Activities included FTK water testing training, household surveys, SHG formation, record management, community awareness campaigns, and operation and maintenance training to ensure sustainable drinking water access. Green India Mission – Forest Department Conducted skill development and environmental livelihood programs under the Green Skill Development Programme (GSDP). Trainings included tailoring, beekeeping, mushroom cultivation, vermicomposting, forest fire prevention, eco-crafts, and agroforestry across remote villages, promoting women empowerment and sustainable rural livelihoods.



JAL JEEVAN MISSION TRAINING

To successfully implement the program, a training session was organized to train them in rural water resource management. This training was focused on the revival of traditional water sources in rural areas. In this, discussions were held by subject experts on how water sources can be conserved, and opinions were shared by the present members. Based on their insights, a future strategy was developed.

The training also included information on:

- How to keep water clean.
- How to store water properly.
- How to make water suitable for drinking.

Details were also given about rainwater harvesting. All participants were taken to the Suryadhar village, where a water reservoir in memory of the late Gajendra Datt Nathani ji was shown, in which a significant amount of water has been stored. This water is being used by the villagers for farming purposes. Additionally, in the nearby village JOGIWALA, a pond constructed by the village head was also visited. Its purpose is to show how water can be conserved and used electively.

CAT Plan – Handicraft & Capacity Building Program



CAT Plan refers to capacity-building programs focused on educating communities, sta, and stakeholders about Catchment Area Treatment. Uttarakhand Government scheme or initiative in Uttrakhand focused on promoting handicrafts (Hastshilp), especially among rural artisans.

Skills Taught:

- Eco-friendly wall hangings & baskets
- Bamboo craft (pen stands, trays)
- Decorative items from forest waste
- Natural dye usage & finishing techniques

Hastshilp Training under CAT Plan- Chakrata, Uttarakhand

S.No.	Village	No. of Villagers
1	Kunasheli	210
2	Tiprad	
3	Bajau	
4	Ratad	
5	Makhati	
6	Kyava	
7	Nagau	
8	Chatau	

To provide skill development and capacity building in traditional handicrafts (Hastshilp) to rural artisans, especially under tribal, SC/ST, or backward community schemes through local handicrafts (Hastshilp) as part of the Catchment Area Treatment Plan, aiming at:

- Sustainable income generation
- Promotion of traditional knowledge
- Reduced dependence on forest resources.
- Women empowerment and skill development.



Hand Holding Support Training

Implemented village-level grievance awareness and governance support programs in Pauri Garhwal and Pithoragarh districts. Sessions focused on pension schemes, ration cards, PM-Kisan benefits, labour cards, MGNREGA, sanitation, Anganwadi services, and local governance strengthening.



S.No.	District	Village
1	Pauri Garhwal	Gadri
2		Buranshi
3		Bandarkot
4		Nansyun
5		Sundarkhol
6		Virangana
7		Chitkalgaon
8	Pithoragarh	Jakdholas
9		Gobrari

Mukhyamantri Hunar Yojana

The Uttarakhand Minority Welfare and Waqf Development Corporation (उत्तराखण्ड अपसं यक कयाण तथा वफ वि कास नि गम) is a statutory body established by the Government of Uttarakhand under Section 25 of the Companies Act, 1956 and aiming to promote the socio-economic development of minority communities in the state.

The Chief Minister's Skill Development Scheme (Mukhyamantri Hunar Yojana) is an important initiative launched by the Government of Uttarakhand to provide vocational training to unemployed youth from minority communities, empowering them with skills for self-employment and enhancing their economic independence. This scheme is implemented by the Uttarakhand Minority Welfare and Waqf Development Corporation.



Shilpi Gram Yojana

This program is financially supported by Uttarakhand Multipurpose Finance and Development Corporation. All participants were trained with a clear understanding of the training rules and objectives, and were required to attend the sessions daily and punctually so that employment opportunities could be created in this field. Before the commencement of training, a meeting was organized with all previous trainees, local government representatives, and officials from the Gramin Kisan Vikas Society (Rural Farmers Development Society).

The meeting was chaired by local dignitaries. The trainers explained the objectives of the training, emphasizing that the program aims to provide employment opportunities for village residents. This would help strengthen the local economy and bring positive changes to the lives of the villagers. It was also informed that the training would run for three months, and efforts would be made to make participants proficient in the relevant skills.



Jeevika Awasar Protsahan Yojana

The trainer trained the trainee through several techniques such as Skin Care and Facial Treatments, Hair Care and Styling, Makeup Techniques, Hand and Foot Care, Hair Removal and Personal Grooming and Client Interaction And also teach them Basics of starting a beauty parlour at home or renting a space and Budgeting and product sourcing.

Spring and River Rejuvenation Authority (SARRA)

Prepared DPRs and conducted scientific field studies for spring and river rejuvenation projects across Uttarakhand. Activities included watershed mapping, geological surveys, recharge area analysis, afforestation planning, and sustainable water resource management initiatives.



Components of a DPR for SARRA

1. Explanation of the need for spring and river rejuvenation in the targeted area, including current water resource status, challenges, and objectives.
2. Detailed survey and mapping of springs, rivers, catchment areas.
3. Proposed methods for rejuvenation such as watershed management, construction of check dams, afforestation, desilting, and other water harvesting techniques.
4. Specifications, drawings, and design parameters for structures and interventions planned in the project.
5. Indicators, frequency, and methods for tracking project progress and outcomes.

Key Functions of GKVS :

- Conduct scientific studies and mapping to identify critical springs and river stretches requiring rejuvenation. We did surveys of geological data in which we find the rock type, orientation of the fracture set and joint set, space openings.
- Implement projects such as watershed management, afforestation, soil conservation, and check dam construction to revive water sources.
- Work closely with local communities to promote traditional water conservation techniques and sustainable water use practices.
- We did data analysis of delineation of the watershed, drained network of the area, delineation of the potential recharge area, on the basis of slope aspect, land use, land cover, landforms and soil type.

GKVS is presently working

Regional Council

GKVS has been authorized as a Regional Council (RC) under the PGS-India Programme by the National Centre for Organic & Natural Farming functioning under the Department of Agriculture and Farmers Welfare and Ministry of Agriculture & Farmers Welfare, Government of India for facilitating Organic Farming Certification and Natural Farming Certification.

Under this authorization GKVS is supporting farmers through cluster formation, farmer mobilization, documentation, peer review, and certification processes. Key certification experience includes:

Natural Farming Certification: GKVS is supporting 9,411 farmers under Natural Farming Certification System (NFCS) through 368 clusters under the PGS-India programme. Scope Certificates Generated: 191 (Kharif Season 2024–2025) Rabi Season: 3 clusters certification process currently ongoing.

Organic Farming Certification: GKVS is working as a Support Agency for PGS Organic Certification supporting 7,847 farmers across 200 clusters for organic farming certification and capacity building.

Namami Gange Programme

Under the Namami Gange programme, GKVS worked with a supporting agency for promotion of Natural Farming practices covering 50 clusters with approximately 1,000 farmers.

Women groups

Majority of Project are being implementing to the betterment of the majority of women of the state. It is because women are the backbone of the state.

Livestock Organic Certification

GKVS along with Mission Anath Development & Welfare Society supported PGS Organic Certification for Sheep & Goat farmers under the Animal Husbandry Department, facilitating certification support for 10 Farmer Producer Organizations

Rural/Urban

GKVS are implementing various projects in rural or remote villages especially for the betterment of the marginal farmers & low income groups

Socioeconomic Group

Basically, all the projects are being implementing with the objective to enhance livelihood of the marginal farmers & the peoples who belongs to low income groups.

Sex Group

Most of the project's implemented for the betterment of women of the state and the final beneficiaries are basically majority of women

Students/Youth

Skill Development Projects/Programmes are being implemented to create opportunities to the youth through enhancing their skills in various trades. The objective of these programmed is to create entrepreneurship approach among them.

THANK YOU NOTE

Dear Supporters, As we reflect on another impactful year, we extend our deepest gratitude to each one of you who has supported and encouraged our mission. Since 2006, GKVS has worked tirelessly to uplift rural communities, empower farmers, and promote sustainability in Uttarakhand. Your unwavering commitment has been the cornerstone of our success.

Through our initiatives in livelihood development, women's empowerment, environmental conservation, and rural education, we have witnessed remarkable transformations. The journey has been challenging yet rewarding, made possible by your invaluable participation—whether through direct involvement, funding, collaboration, or spreading awareness.

Looking ahead, we remain dedicated to expanding our efforts with new programs that further strengthen rural communities. We hope you will continue to stand with us in this endeavor, shaping a future of resilience and prosperity together.

Thank you for being an integral part of our mission. Your support fuels our progress and inspires us to keep striving for meaningful change.

With gratitude,

Gramin Kisan vikas society